



(3)

2006

© 1432 - 2011

:

(3)

2011

:

- 1647 . .

(970/972) 2 298 2700 :

(970/972) 2 298 2710 :

1800300300 :

diwan@pcbs.gov.ps :

<http://www.pcbs.gov.ps> :



Source: Palestinian Central Bureau of Statistics

(3)

(PNA)

2011 (CFG)

.(SDC)

(CFG)

•

•

•

•

•

•

•

(3)

.

:

(-)

(..)

25	:
29	:
29	1.2
29	2.2
31	3.2
33	
35	:
35	1.3
35	1.1.3
37	2.1.3
41	3.1.3
42	4.1.3
45	5.1.3
46	2.3
46	1.2.3
47	2.2.3
48	3.2.3
53	() 4.2.3
53	3.3
53	1.3.3
54	2.3.3
54	3.3.3
54	4.3.3
57	
59	

61			:1
		2011-2007 1997	
62			:2
		2011-2007	
62			:3
		2007	
63	2011		:4
63	2007		:5
64			:6
		2010-1999	
64			:7
		2010	
64			:8
	2010		
65			:9
		2010	
65	-1999		:10
		2010	
66			:11
		2010	
66			:12
		2010	
67			:13
		2010	
67		1000	:14
		2010-2005	
67	2010-2005		:15

68			:16
		2010-2005	
68	(15)	:17
		2010-2005	
69			:18
		2010-2009	
69			:19
	2011/2010-2010/2009		
70			:20
	2011/2010-2010/2009		
71			:21
	2011/2010-2005/2004		
72			:22
		2011/2010-2005/2004	
72	(15)	:23
		2010	
73	(15)	:24
		2010-2007	
73	2010		:25
74	2010		:26
74			:27
		2010	
74			:28
		2010/2009	
75	2010		:29
75			:30
		2010	
75			:31
		2010	

35	2011-2007 1997	:1
36		:2
	2010-1999	
37		:3
	2010-2005	
41	(15)	:4
	2010-2005	
42	(15)	:5
	2010	
45		:6
	2011/2010	
46		:7
	2011/2010	
47		:8
	2010/2009	
48	2010	:9
49	2010	:10
49		:11
	2010	
54	2010	:12

39	2011		:1
43		(15) 2010	:2
51	2007		:3

	23,406	46,718	:	2011	•
				23,312	•
		%49.5		.2007	•
293		2010			•
		91			•
		2,188		2010	•
				140	•
	54			2010	•
				1000	1.2
	%48.6			(15)	•
			2010		•
				.%12.7	•
			.2010	%26.4	•
17	30		2011/2010		•
			.2010	² 593	•
	.2010/2009		1,541		•
202		2010			•
			42.1		•
	11				•
		.2010		13	•
		2,331		2010	•
	2008	2009			•
				51.7	•
	2008	2009			•
				3.0	•
	48.7	2009			•

:

.1

14

:)

.(

.2

.3

2010

.4

:

						:	
						:2011/2010 -2005/2004	.1
)					(
						.	
		1995				:2010-2005	.2
						.	
					608	7,563	
					:2010	2009	.3
						.	
						:(2009-1996)	.4
						1996	
	19	100	2009	1996	66		
						.	
						:1997	.5
						.	
			1967			1967	
						.	
					2007		.6
					2007		
2007						.	
						(2007/12/1-11/30)	
						.	
		2010/6/26 -2010/6/01				:2010	.7
						.	
					.2010		
						:2010	.8
						.	
						:2010	.9

2010/10/1

2010/10/01 /09/30

) 12

.(2010/09/30 - 2009/10/1

:

1

.1

5 (...)

.2

.3

/) (5)

:

(50) ()

(50) (

(3)

:2010-1999 .10

:2009 -2005 .11

)

.(

1.2

276

.51-31

35-28

)

14

.(

23

200-150

25-20

500

%50

2100

2.2

7000

2

1600-1750

1188

1030-1170

327-306

637

64

350 - 250

1944

1948/12/1

1967

1967

1993

1994

1994

.2011 -1912

300	(1)1912
1,039	(1)1922
1,693	(1)1931
3,010	(1)1945
10,166	(1)1961
15,000	(1)1978
14,674	(10)1997
17,515	(11)2007
20,253	(12)2011

1,039 1912 300 1948
.2011 20,253 2007 17,515 1922

3.2

:

:

:

.

.

:

.

. (http://www.nazweb.jeeran.com/cities/westbank/jericho.htm)	.1
. (http://ar.wikipedia.org/wiki/%D8%A7%D8%B1%D9%8A%D8%AD%D8%A7)	.2
. (http://www.areeha.com/forum/viewtopic.php?f=2&t=2485)	.3
.(5) " " .4	
. (http://www.pal-chambers.org/arabic/arabichamb/jer2.html)	.5
.2007 .2008	.6
	-
"2007 "	.7
. (http://www.pal-chambers.org/arabic/arabichamb/jer2.html)	.8
	" .9
1997- .1999	.10
- () -	
) - - .2009	.11
- (
.2011	.12
- .2007	

1.3

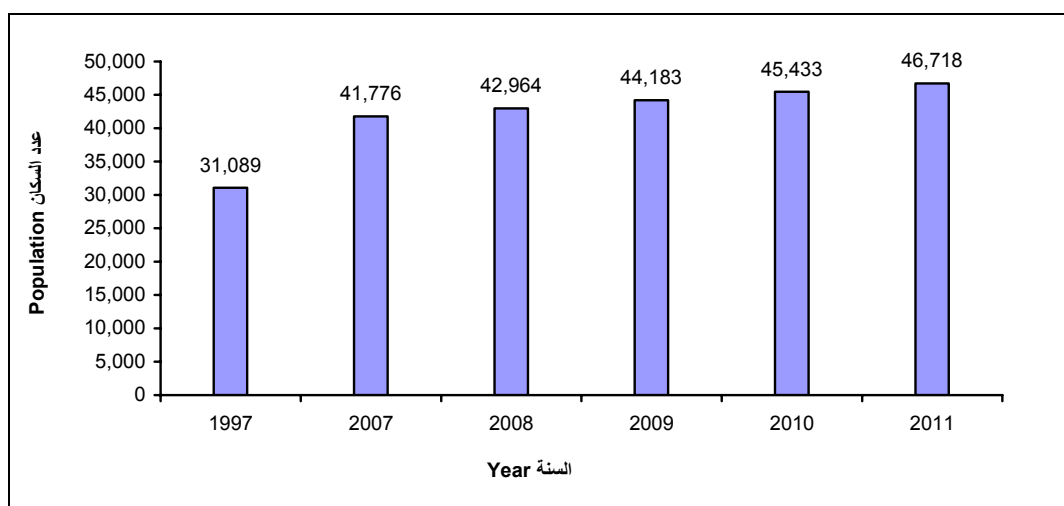
1.1.3

2011 46,718
23,312 23,406
.1997 %50.3
2007 %49.5
2011 .2007
78.8 / .²

2011-2007 1997

:1

Figure 1: Estimated Population in Jericho & AL Aghwar Governorate at Mid-Year, 1997, 2007-2011



:

293

2010

19.6

24.9

91

2010

20

18

29

24-20

18

11

29-25

30

5

34-30

10

12

39-35

7

16

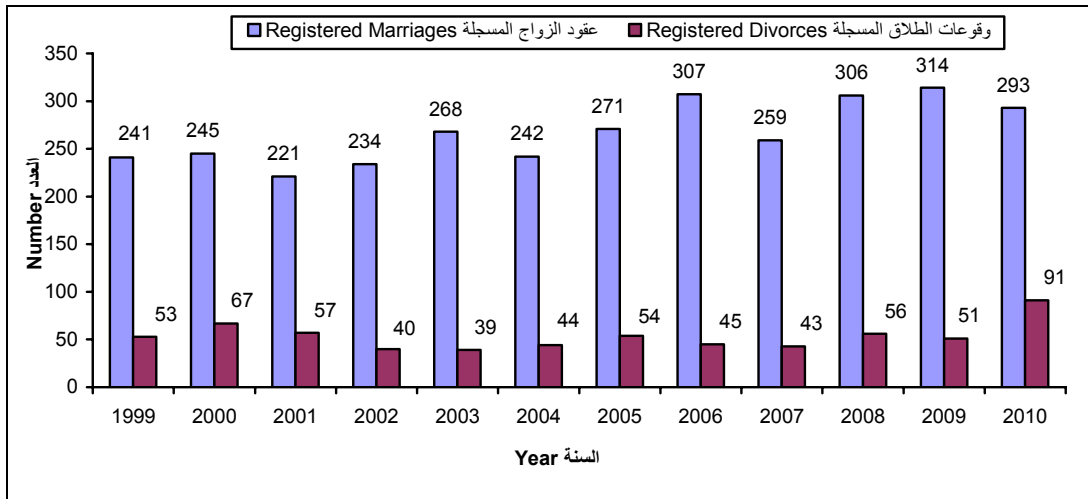
26

22

:2

2010-1999

Figure 2: Number of Registered Marriages and Divorces in Shariah and Church Courts in Jericho & AL Aghwar Governorate, 1999-2010



:

1,141)

2,188

2010

%3.4

(1,047

55

85

%2.4

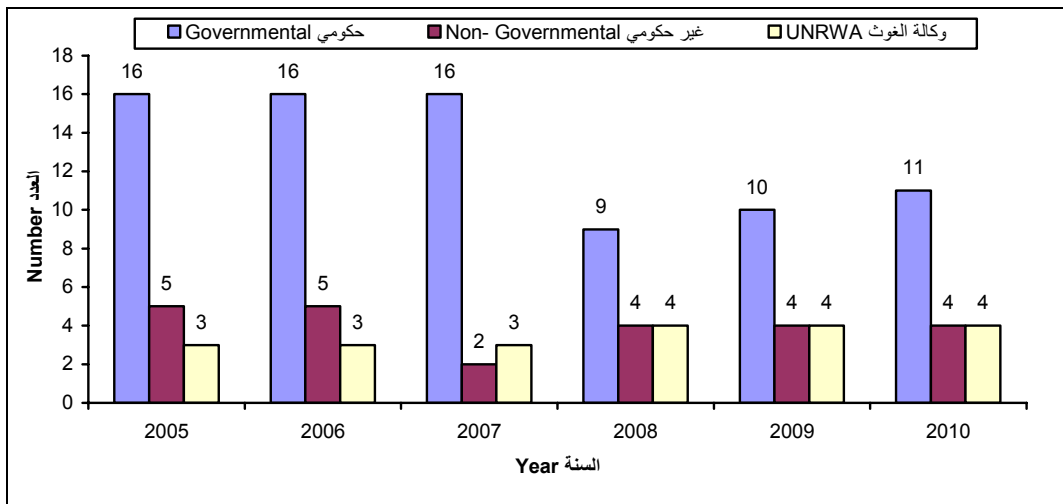
140

11 1000 1.2 54 2010
 4 2010 4

2010-2005

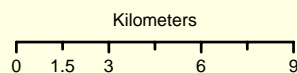
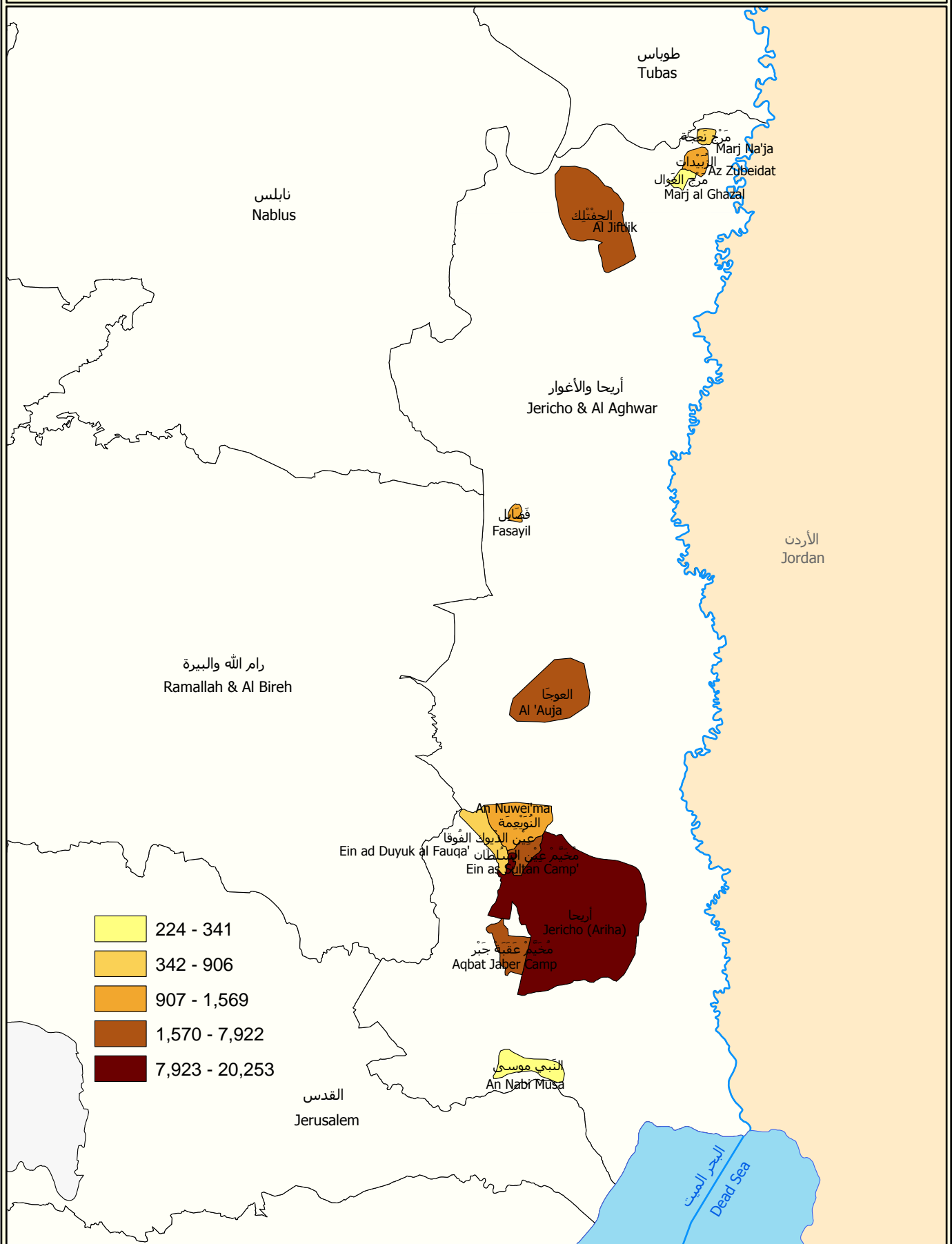
:3

Figure 3: Number of Primary Health Care Clinics and Centers in Jericho & AL Aghwar Governorate by Supervising Authority, 2005-2010



خريطة 1: السكان في محافظة أريحا والأغوار منتصف العام حسب التجمع السكاني، 2011.

Map 1: Population in Jericho and Al-Aghwar Governorate at Mid Year by Locality, 2011.



المصدر: الجهاز المركزي للإحصاء الفلسطيني، 2011
Source: Palestinian Central Bureau of Statistics, 2011

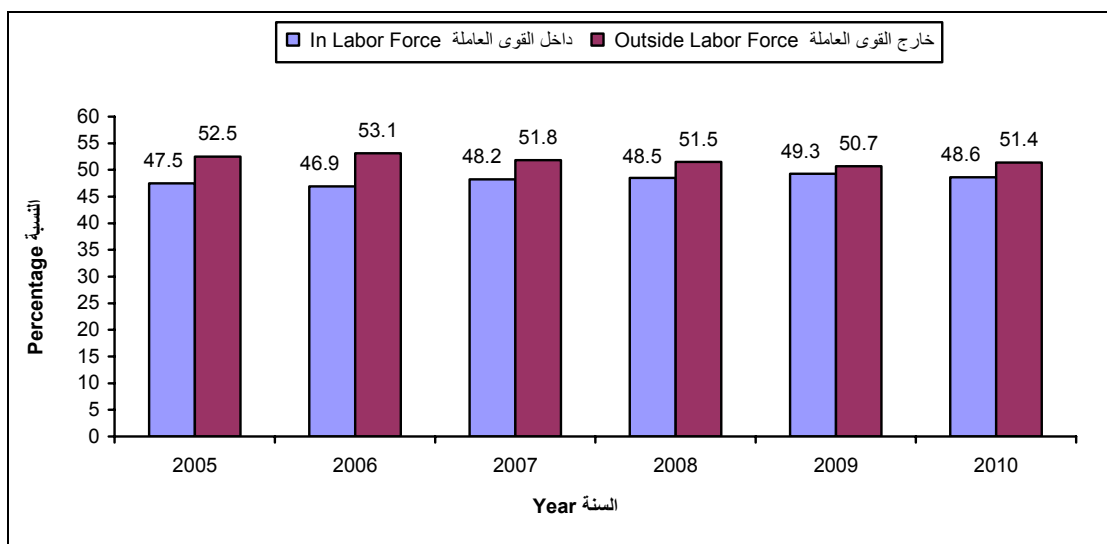


- Some of the Localities (Deir Hajla, Deir al Qilt) were not presented on the map because the population in these Localities is very few.

- بعض التجمعات (دير حجلة، دير القلطة)، لم يتم تمثيلها على الخريطة لكون عدد السكان فيها قليل جداً.

(15)
 .2010 %48.6
 %73.4 %22.2
 %1.5 %87.3
 %13.3 %10.8 %12.7

2010-2005 (15) :4
Figure 4: Percentage Distribution of Population (15 Years and Above) in Jericho & AL Aghwar Governorate by Labor Force Status, 2005-2010



-Data for the years 2005-2008 are Revised.

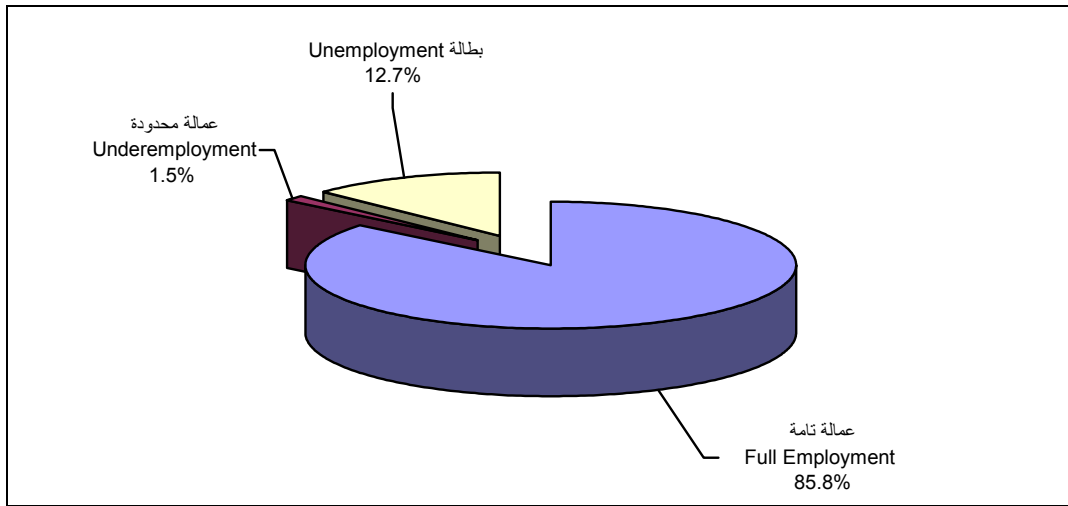
2008-2005

2010

(15)

:5

Figure 5: Percentage Distribution of Population (15 Years and Above) in Jericho & AL Aghwar Governorate by Labor Force Components, 2010



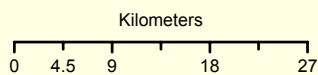
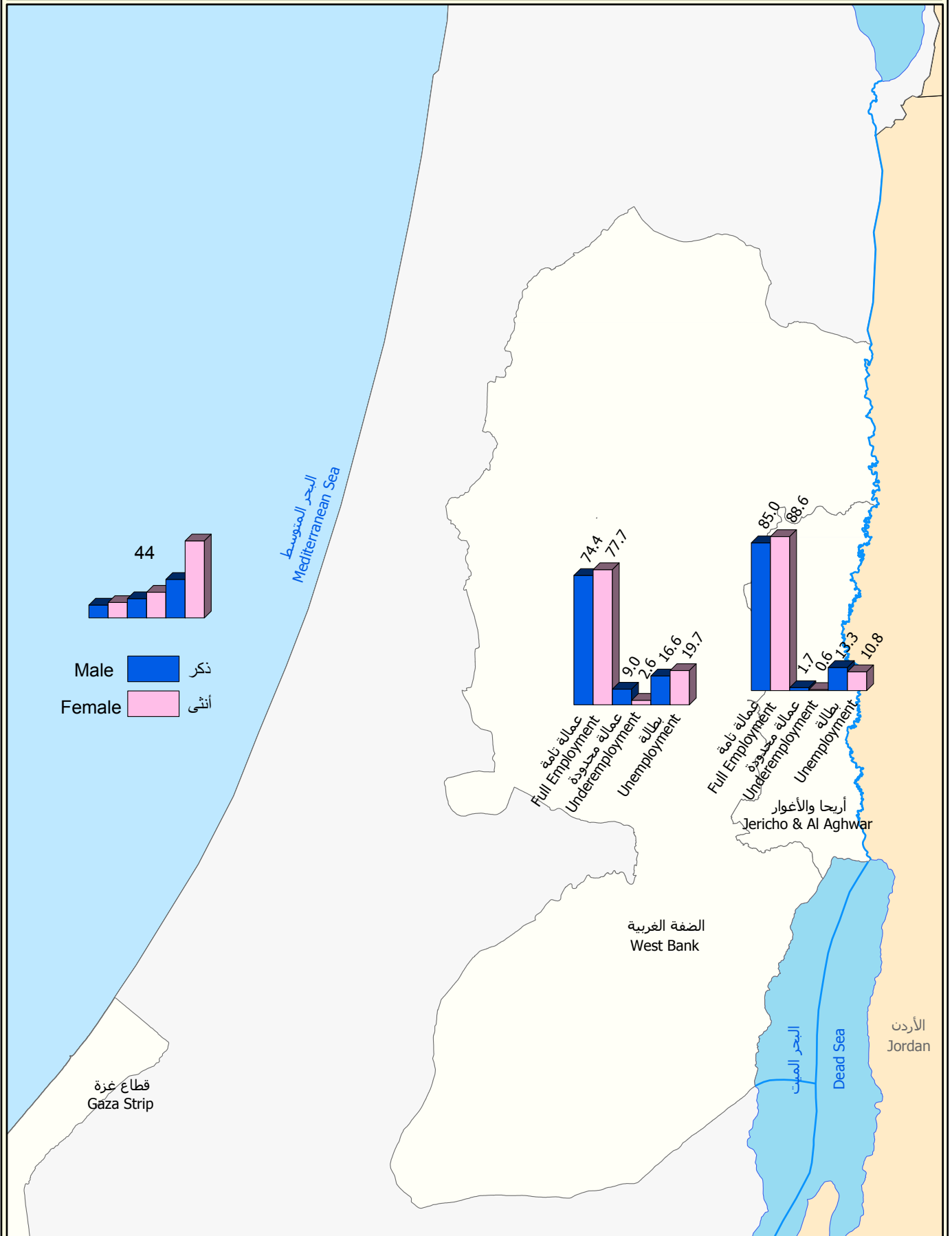
4.1.3

2010 2009 %26.4 %29.1

2010 2009 %18.3 %19.4

خريطة 2: التوزيع النسبي للأفراد (15 سنة فأكثر) في محافظة أريحا والأغوار وال الضفة الغربية حسب الجنس ومركبات القوى العاملة، 2010.

Map 2: Percentage Distribution of Population (15 Years and Above) in Jericho and Al-Aghwar Governorate and the West Bank by Sex and Labor Force Components, 2010.



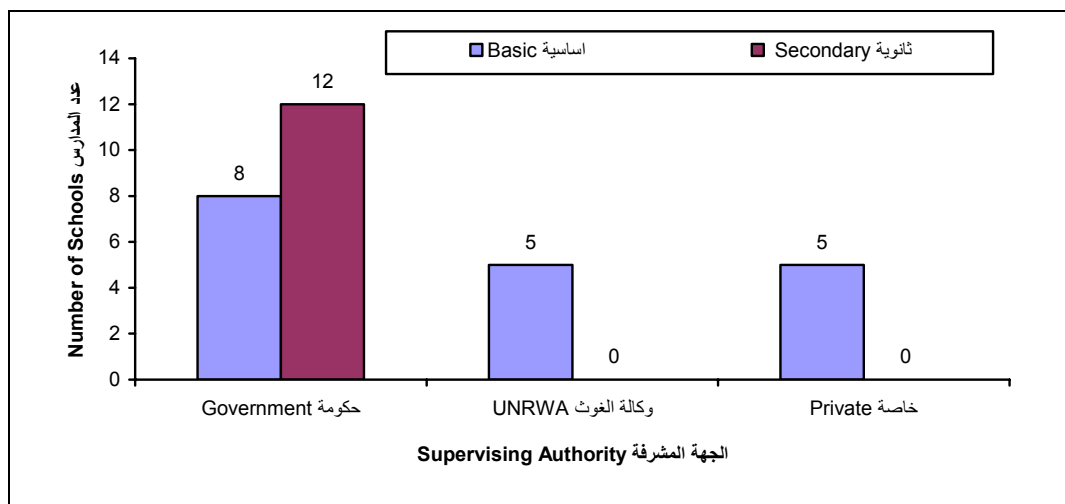
5.1.3

	20	30	2011/2010	12	8
17	5 ()	5 (1,975	(
				782)
		11,659			
	2,217	2,511	5,978	5,681	2011/2010
	1,973	3,224		953	
	29.3	21.7			781
				21.9	
		2010 (15)		
		.%14.8			%.6.7
				%.6.2	%.7.1 (
(15)	%.7.0		%.19.1	%.10.7
				%.10.9	%.3.3

2011/2010

:6

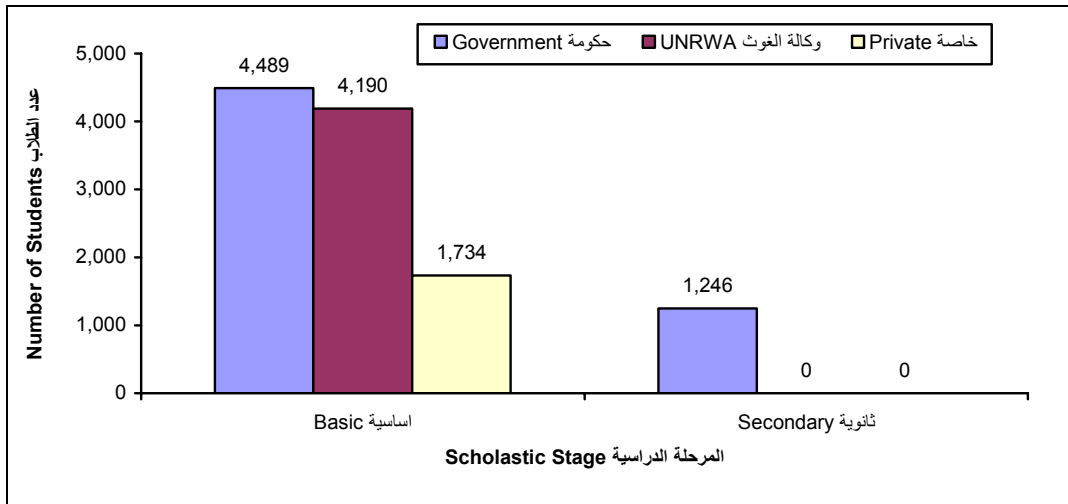
Figure 6: Number of Schools in Jericho & AL Aghwar Governorate by Stage and Supervising Authority, 2010/2011



2011/2010

:7

Figure 7: Number of Students in Schools in Jericho & AL Aghwar Governorate by Stage and Supervising Authority, 2010/2011



475

7

3

2010

1,760

42

.2010

2.3

1.2.3

%10.5

2010² 593

%4.9

² 29.0

%3.3

.2010/2009

%1.7

1,541

543

%12.3

190

%35.2

%52.5

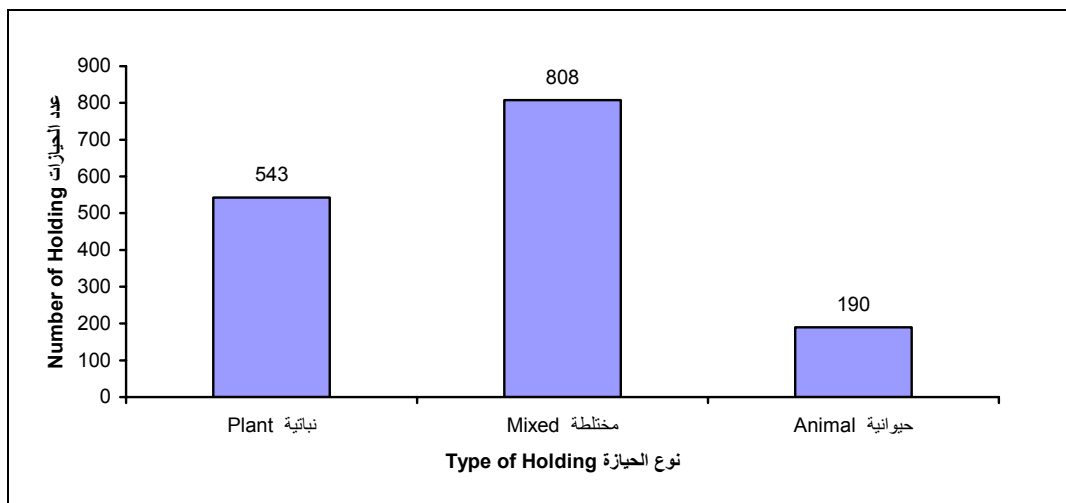
808

.2010/2009

2010/2009

:8

Figure 8: Number of Agricultural Holdings in Jericho & AL Aghwar Governorate by Type of Holding, 2009/2010



865

2010/10/01

%6.6

33,032

%3.0

25,791

%12.0

2.2.3

%45.3

2010

%47.7

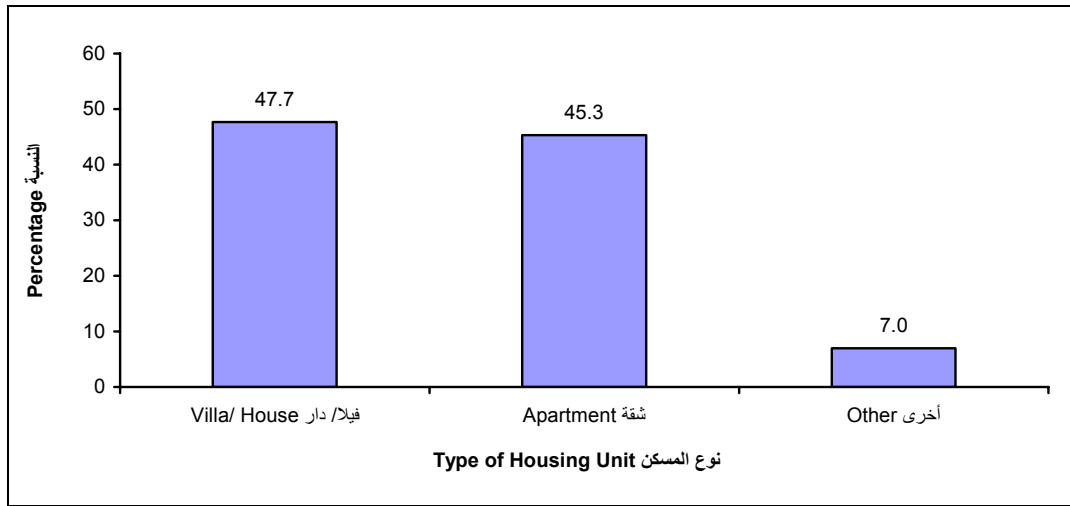
%84.4

%7.0 2010

2010

:9

Figure 9: Percentage Distribution of Households in Jericho & AL Aghwar Governorate by Type of Housing Unit, 2010



3.2.3

202
41.8
90
2010

0.3
2009

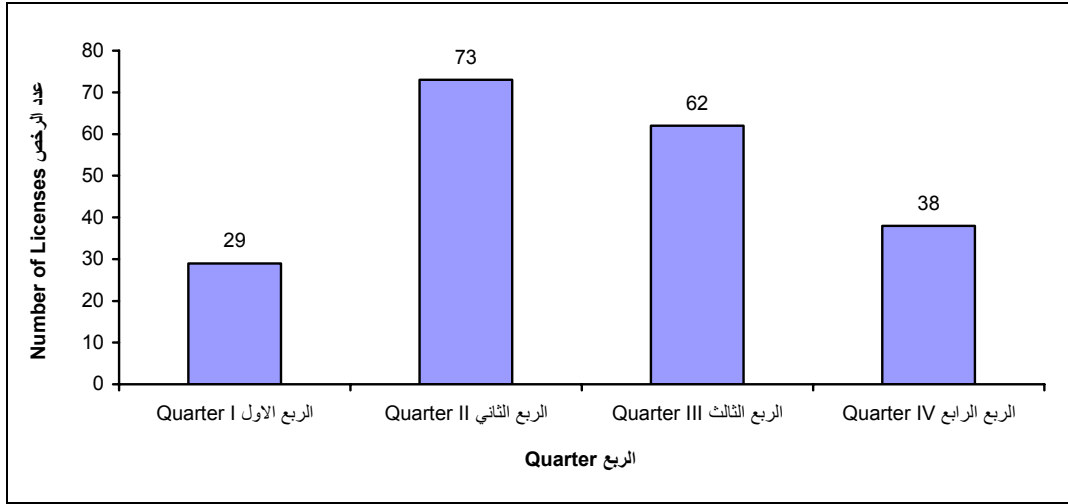
2010
42.1
24.6
2009

%124.4

2010

:10

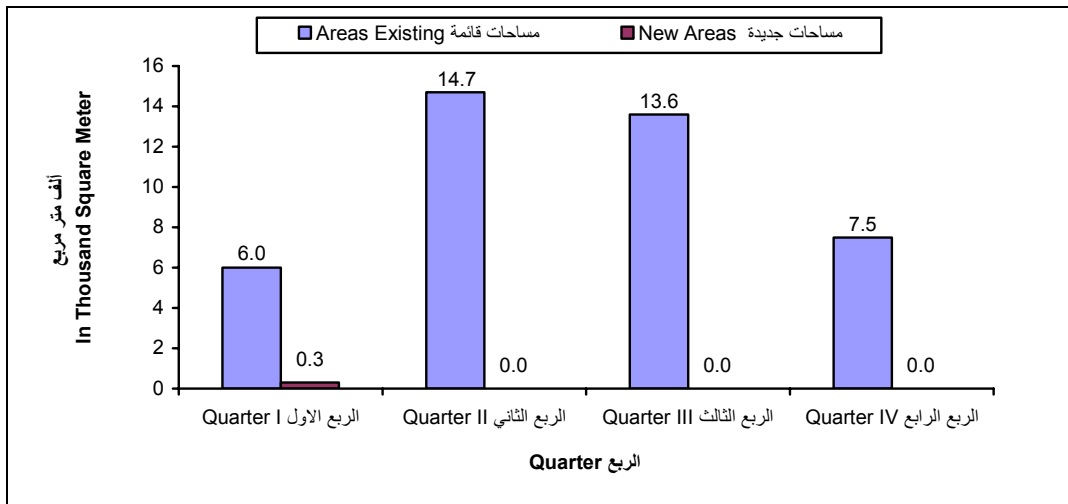
Figure 10: Number of Issued Building Licenses in Jericho & AL Aghwar Governorate by Quarter, 2010



2010

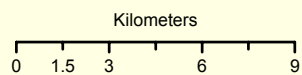
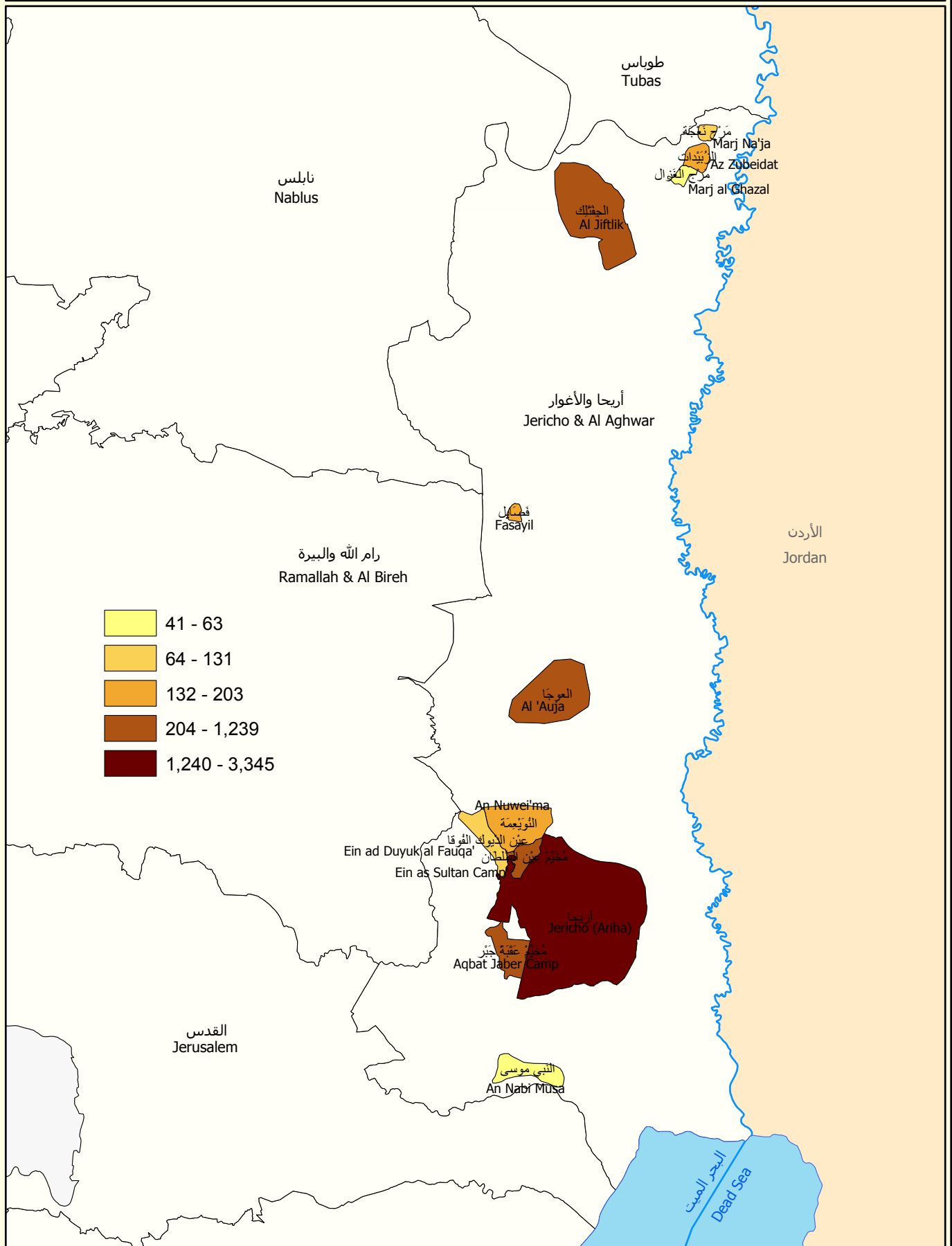
:11

Figure 11: Licensed Area for Building in Jericho & AL Aghwar Governorate by Area Type and Quarter, 2010



خريطة 3: المساكن المأهولة في محافظة أريحا والأغوار حسب التجمع، 2007.

Map 3: Occupied Housing Units in Jericho and Al-Aghwar Governorate by Locality, 2007.



المصدر: الجهاز المركزي للإحصاء الفلسطيني، 2011
 Source: Palestinian Central Bureau of Statistics, 2011



		()	4.2.3
				:	
	11				
.2010				()
				:	
			13		
		.2010			
				:	
2010					
					7
		3			
				3	
			9		7
				:	
10					
		3			
				.2010	
					3.3
					1.3.3
2009		1,209			
		883	2,702	3,585	
	1,023		541		
			495	99	
				742	251
				276	105

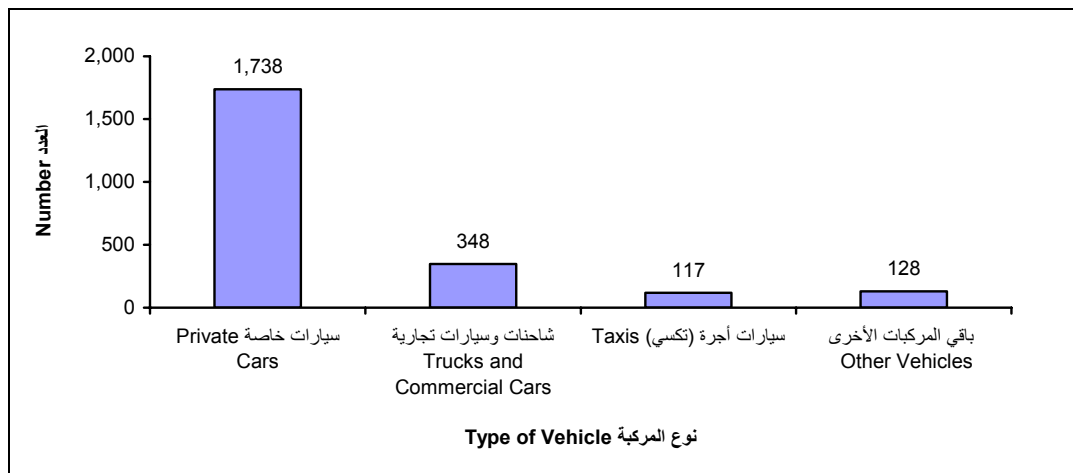
2.3.3

2010	2,331	%1.9
	%74.6	
	%5.0 ()	%14.9
	282	%1.4
	%71.6	
	%12.4 ()	
		%7.5
		%8.5

2010

:12

Figure 12: Number of Licensed Road Vehicles in Jericho & AL Aghwar Governorate by Type of Vehicle, 2010



3.3.3

2010	3	%3.5
63,166	721	329
		99,127

4.3.3

2008	2009	:
51.7	2008	2009
	.2008	36.7
24.4		%47.2

			%20.9	10.8
			19.8	
			:	
	2008	2009		
	.2008	3.2	2009	3.0
1.1	1.3			
			%43.3	
	%10.1		%35.5	
6.8		305.5		
	.2009		%0.2	
			:	
.2009		48.7		

		.2011		.1
			- .2007	
:2007		.2009		.2
			-	
:2007		.2008		.3
			-	
2007 -		.2010	() -	.4
			- .2009/12/31	
	2010	.2011		.5
			-	
	- .2010	.2011		.6
.2011/2/10		.2011		.7
			-	
.(2010-2005)		.2011		.8
			-	
		.2010-2005	-	.9
.(2010-2005)		.2011		.10
			-	
.(2010-2009)		.2011		.11
			-	
.2010/2009-2005/2004		.2011		.12
			-	
-2010		.2010		.13
			-	
	2010	.2011		.14
			-	
	- .2010	.2011		.15
.2009		.2010		.16
			-	
.2010		.2011		.17
			-	

				.2011			.18
					.	-	.2010
.	-	.2010		.2011			.19
.	-		-	.2011			.20

Tables

2011-2007 ,1997

:1

Table 1: Estimated Population in the Palestinian Territory at Mid-Year by Region and Governorate, 1997, 2007-2011

Region\Governorate	Year						/
	2011	2010	2009	2008	2007	1997	
Palestinian Territory	4,168,858	4,048,403	3,935,249	3,825,512	3,719,189	2,783,084	
West Bank	2,580,167	2,513,283	2,448,433	2,385,180	2,323,469	1,787,562	
Jenin	281,156	274,001	267,027	260,216	253,558	192,743	
Tubas	56,642	54,765	52,950	51,192	49,489	34,755	
Tulkarm	168,973	165,791	162,668	159,594	156,566	127,341	
Nablus	348,023	340,117	332,389	324,816	317,391	248,102	
Qalqiliya	100,012	97,447	94,947	92,506	90,120	68,361	
Salfit	64,614	63,148	61,714	60,309	58,932	46,077	
Ramallah & Al Bireh	310,218	301,296	292,629	284,195	275,981	202,759	
Jericho & AL Aghwar	46,718	45,433	44,183	42,964	41,776	31,089	
Jerusalem	389,298	382,041	375,167	368,394	361,743	320,809	
Bethlehem	194,095	188,880	183,804	178,853	174,022	130,361	
Hebron	620,418	600,364	580,955	562,141	543,891	385,165	
Gaza Strip	1,588,691	1,535,120	1,486,816	1,440,332	1,395,720	995,522	
North Gaza	309,434	297,269	286,246	275,687	265,594	178,605	
Gaza	551,832	534,558	519,027	504,047	489,642	357,768	
Deir Al-Balah	230,689	222,866	215,808	209,014	202,493	144,015	
Khan Yunis	301,138	291,737	283,286	275,134	267,294	195,475	
Rafah	195,598	188,690	182,449	176,450	170,697	119,659	

2011-2007

:2

Table 2: Estimated Population in Jericho & AL Aghwar Governorate and the West Bank at Mid-Year by Sex, 2007-2011

Year	Jericho & AL Aghwar			West Bank			
		Females	Males		إناث Females	Males	
2007	41,776	20,846	20,930	2,323,469	1,143,989	1,179,480	2007
2008	42,964	21,439	21,525	2,385,180	1,174,299	1,210,881	2008
2009	44,183	22,047	22,136	2,448,433	1,205,369	1,243,064	2009
2010	45,433	22,671	22,762	2,513,283	1,237,225	1,276,058	2010
2011	46,718	23,312	23,406	2,580,167	1,269,933	1,310,234	2011

2007

:3

Table 3: Palestinian Population in Jericho & AL Aghwar Governorate and the West Bank at End Year by Refugee Status, 2007

Region\Governorate	Total	Refugee Status			/
		Not Stated	Not-Refugee	Refugee	
Jericho & AL Aghwar	40,305	1,232	18,383	20,690	
West Bank	2,279,969	55,351	1,600,551	624,067	

Note: Includes population counted during the period of 2007/12/16-1
1-16/12/2007 and does not include uncounted population
estimates according to post enumeration survey.

2011

:4

Table 4: Population in Jericho & AL Aghwar Governorate at Mid-Year by Locality, 2011

Locality	Population	
Marj Na'ja	789	
Az Zubeidat	1,569	
Marj al Ghazal	224	
Al Jiftlik	4,100	
Fasayil	1,190	
Al 'Auja	4,548	
An Nuwei'ma	1,374	
'Ein ad Duyuk al Fauqa	906	
'Ein as Sultan Camp	3,488	
Jericho (Ariha)	20,253	
Aqbat Jaber Camp	7,922	
An Nabi Musa	341	
Other Localities*	14	*
Jericho & AL Aghwar Governorate	46,718	

* Other Localities: Deir Hajla, Deir al Qilt.

2007

:5

Table 5: Number of Occupied Housing Units in Jericho & AL Aghwar Governorate by Locality, 2007

Locality	Number of Housing Units	
Marj Na'ja	111	
Az Zubeidat	190	
Marj al Ghazal	41	
Al Jiftlik	552	
Fasayil	182	
Al 'Auja	643	
An Nuwei'ma	203	
'Ein ad Duyuk al Fauqa	131	
'Ein as Sultan Camp	562	
Jericho (Ariha)	3,345	
Deir al Qilt	1	
Aqbat Jaber Camp	1,239	
Deir Hajla	1	
An Nabi Musa	63	
Jericho & AL Aghwar Governorate	7,264	

2010-1999

:6

Table 6: Number of Registered Marriages in Shariah and Church Courts in Jericho & AL Aghwar Governorate, 1999-2010

Year	Registered Marriages	
1999	241	1999
2000	245	2000
2001	221	2001
2002	234	2002
2003	268	2003
2004	242	2004
2005	271	2005
2006	307	2006
2007	259	2007
2008	306	2008
2009	314	2009
2010	293	2010

2010

:7

Table 7: Median Age at First Marriage in Jericho & AL Aghwar Governorate and the West Bank by Sex, 2010

Governorate\ Region	Females	Males	/
Jericho & AL Aghwar	19.6	24.9	
West Bank	20.1	25.4	

:8

2010

Table 8: Number of Registered Marriages in Shariah and Church Courts in Jericho & AL Aghwar Governorate by Previous Marital Status of Groom, Bride, 2010

Previous Marital Status of Groom	Previous Marital Status of Bride			
	Total	Widowed	Divorced	Never Married
Never Married	230	1	12	217
Married	36	2	8	26
Divorced	26	0	10	16
Widowed	1	0	0	1
Total	293	3	30	260

2010

Table 9: Number of Registered Marriages in Shariah and Church Courts in Jericho & AL Aghwar Governorate by Age of Groom and Bride, 2010

Age of Groom	المجموع Total	Age of Bride						
		+40	39-35	34-30	29-25	24-20	20	
Less than 20	24	0	0	0	0	1	23	أقل من 20
20-24	97	0	0	0	3	28	66	24-20
25-29	100	0	0	3	15	39	43	29-25
30-34	34	0	2	3	7	14	8	34-30
35-39	14	0	1	2	4	4	3	39-35
40+	24	5	2	7	5	4	1	+40
Total	293	5	5	15	34	90	144	

2010-1999

:10

Table 10: Number of Registered Divorces in Shariah Courts in Jericho & AL Aghwar Governorate, 1999-2010

Year	Registered Divorces	
1999	53	1999
2000	67	2000
2001	57	2001
2002	40	2002
2003	39	2003
2004	44	2004
2005	54	2005
2006	45	2006
2007	43	2007
2008	56	2008
2009	51	2009
2010	91	2010

:11

2010

Table 11: Number of Registered Divorces in Shariah Courts in Jericho & AL Aghwar Governorate by Age of Divorcees, 2010

Age of Divorce	المجموع Total	Age of Divorcee						
		+40	39-35	34-30	29-25	24-20	أقل من 20	
Less than 20	0	0	0	0	0	0	0	أقل من 20
20-24	18	0	0	0	0	6	12	24-20
25-29	30	0	0	1	7	16	6	29-25
30-34	10	0	0	1	4	5	0	34-30
35-39	7	1	3	2	0	1	0	39-35
40+	26	15	9	1	0	1	0	+40
Total	91	16	12	5	11	29	18	

2010

:12

Table 12: Number of Registered Divorces in Shariah Courts in Jericho & AL Aghwar Governorate by Duration of Marriage, 2010

Duration of Marriage	Number of Divorces	
Less than One Year	22	
1	14	1
2	15	2
3	6	3
4	1	4
5	5	5
6-7	3	7-6
8-9	5	9-8
10-14	3	14-10
15-19	7	19-15
20+	10	+20
Total	91	

:13

2010

Table 13: Number of Registered Live Births and Registered Deaths in Jericho & AL Aghwar Governorate and the West Bank by Sex, 2010

Region\Governorate	Deaths			Births			/
	Total	Females	Males	Total	Females	Males	
Jericho & AL Aghwar	140	55	85	2,188	1,047	1,141	
West Bank	5,961	2,753	3,208	65,131	31,511	33,620	

2010-2005

1000

:14

Table 14: Beds Per 1000 Inhabitant, Number of Hospitals and Number of Beds in Jericho & AL Aghwar Governorate, 2005-2010

Year	Number of Beds	Hospitals	1000 من السكان Beds Per 1000 Inhabitant	
2005	54	1	1.4	2005
2006	54	1	1.3	2006
2007	54	1	1.3	2007
2008	54	1	1.3	2008
2009	54	1	1.2	2009
2010	54	1	1.2	2010

2010-2005

:15

Table 15: Hospital Activities in Jericho & AL Aghwar Governorate by Activity, 2005-2010

Indicator	Year						()
	2010	2009	2008	2007	2006	2005	
Governmental Hospitals	1	1	1	1	1	1	
Non-Governmental Hospitals	0	0	0	0	0	0	
Grand Total of Discharges	5,301	6,264	5,964	4,404	4,844	5,971	
Grand Total of Beds Occupancy Rate	54.1	64.5	60.4	46.0	52.8	65.7	
Mean of Duration (day)	2.0	2.0	2.0	2.1	2.1	2.2	

2010-2005

:16

Table 16: Number of Primary Health Care Clinics and Centers in Jericho & AL Aghwar Governorate by Supervising Authority, 2005-2010

Supervising Authority	Number of Clinics and Centers					
	2010	2009	2008	2007	2006	2005
Governmental	11	10	9	16	16	16
Non- Governmental	4	4	4	2	5	5
UNRWA	4	4	4	3	3	3

(15)

:17

2010-2005

Table 17: Percentage Distribution of Population (15 Years and Above) in Jericho & AL Aghwar Governorate by Sex and Labor Force Status, 2005-2010

Labor Force Status and Sex	Year					
	2010	2009	2008	2007	2006	2005
Both Sexes						
In Labor Force	48.6	49.3	48.5	48.2	46.9	47.5
Outside Labor Force	51.4	50.7	51.5	51.8	53.1	52.5
Total	100	100	100	100	100	100
Full Employment	85.8	88.3	84.6	82.8	81.9	84.3
Underemployment	1.5	3.6	5.6	7.4	3.7	2.6
Unemployment	12.7	8.0	9.8	9.7	14.4	13.1
Total	100	100	100	100	100	100
Males						
In Labor Force	73.4	77.0	77.4	78.0	77.6	78.1
Outside Labor Force	26.6	23.0	22.6	22	22.4	21.9
Total	100	100	100	100	100	100
Full Employment	85.0	86.9	83.6	83.1	81.0	84.0
Underemployment	1.7	4.4	6.4	9.1	4.0	3.0
Unemployment	13.3	8.7	10.0	7.8	14.9	13.0
Total	100	100	100	100	100	100
Females						
In Labor Force	22.2	22.3	20.9	20.3	17.5	18.2
Outside Labor Force	77.8	77.7	79.1	79.7	82.5	81.8
Total	100	100	100	100	100	100
Full Employment	88.6	93.0	88.2	81.9	85.3	85.4
Underemployment	0.6	1.1	2.5	1.3	2.5	0.8
Unemployment	10.8	5.9	9.4	16.9	12.2	13.8
Total	100	100	100	100	100	100

- Data for the years 2005-2008 are Revised.

2008-2005

2010-2009

:18

Table 18: Poverty Rates According to Actual Monthly Consumption Patterns of Individuals in Jericho & AL Aghwar Governorate and the West Bank, 2009-2010

Region\Governorate	2010				2009				/
	Deep poverty	poverty Severity	Poverty Gap	Poverty	Deep poverty	poverty Severity	Poverty Gap	Poverty	
Jericho & AL Aghwar	16.4	2.4	6.8	26.4	14.8	1.9	6.5	29.1	
West Bank	8.8	1.4	4.1	18.3	9.1	1.4	4.2	19.4	

:19

2011/2010-2010/2009

Table 19: Number of Schools and Kindergartens in Jericho & AL Aghwar Governorate and the West Bank by Stage and Supervising Authority, 2009/2010-2010/2011

Region and Scholastic Year	Schools			Kindergartens	
	Total	Secondary	Basic		
Jericho & Al-ghwar Governorate					
2009/2010					2010/2009
Government	20	12	8	-	
UNRWA	5	-	5	-	
Private	5	-	5	16	
Total	30	12	18	16	
2010/2011					2011/2010
Government	20	12	8	-	
UNRWA	5	-	5	-	
Private	5	-	5	17	
Total	30	12	18	17	
West Bank					
2009/2010					2010/2009
Government	1,534	656	878	2	
UNRWA	97	-	97	-	
Private	286	80	206	729	
Total	1,917	736	1,181	731	
2010/2011					2011/2010
Government	1,573	678	895	2	
UNRWA	98	-	98	-	
Private	304	82	222	780	
Total	1,975	760	1,215	782	

2011/2010-2010/2009

:20

Table 20: Number of Students in Schools and Kindergartens in Jericho & AL Aghwar Governorate and the West Bank by Supervising Authority, Sex and Stage, 2009/2010-2010/2011

Region and Scholastic Year	Students									Kindergartens			
	Total			Secondary			Basic						
	Total	Females	Males	Total	Females	Males	Total	Females	Males	Total	Females	Males	
Jericho & Al-ghwar													2010/2009
2009/2010													
Government	5,875	3,285	2,590	1,221	704	517	4,654	2,581	2,073	-	-	-	
UNRWA	4,281	2,006	2,275	-	-	-	4,281	2,006	2,275	-	-	-	
Private	1,602	702	900	-	-	-	1,602	702	900	1,173	593	580	
Total	11,758	5,993	5,765	1,221	704	517	10,537	5,289	5,248	1,173	593	580	
2010/2011													2011/2010
Government	5,735	3,224	2,511	1,246	718	528	4,489	2,506	1,983	-	-	-	
UNRWA	4,190	1,973	2,217	-	-	-	4,190	1,973	2,217	-	-	-	
Private	1,734	781	953	-	-	-	1,734	781	953	1,236	609	627	
Total	11,659	5,978	5,681	1,246	718	528	10,413	5,260	5,153	1,236	609	627	
West Bank													2010/2009
2009/2010													
Government	531,523	270,606	260,917	83,430	46,536	36,894	448,093	224,070	224,023	119	63	56	
UNRWA	55,473	32,029	23,444	-	-	-	55,473	32,029	23,444	-	-	-	
Private	73,569	30,647	42,922	5,532	2,469	3,063	68,037	28,178	39,859	56,609	27,515	29,094	
Total	660,565	333,282	327,283	88,962	49,005	39,957	571,603	284,277	287,326	56,728	27,578	29,150	
2010/2011													2011/2010
Government	536,118	272,966	263,152	83,430	47,106	36,894	448,093	224,070	224,023	119	63	56	
UNRWA	53,495	31,160	22,335	-	-	-	55,473	32,029	23,444	-	-	-	
Private	77,124	32,177	44,947	5,722	2,567	3,155	71,402	29,610	41,792	60,013	29,023	30,990	
Total	666,737	336,303	330,434	90,162	49,673	40,489	576,575	286,630	289,945	60,134	29,092	31,042	

2011/2010-2005/2004

Table 21: Average Number of Students Per Class in Jericho & AL Aghwar Governorate by Stage and Supervising Authority, 2004/2005-2010/2011

Stage and Scholastic Year	Supervising Authority			/ Grand Average	
	Private	UNRWA	Government		
Kindergartens					
2004/2005	-	-	-	24.5	2005/2004
2005/2006	-	-	-	23.5	2006/2005
2006/2007	-	-	-	23.5	2007/2006
2007/2008	23.3	-	-	23.3	2008/2007
2008/2009	21.7	-	-	21.7	2009/2008
2009/2010	22.6	-	-	22.6	2010/2009
2010/2011	21.7	-	-	21.7	2011/2010
Basic					
2004/2005	31.1	40.8	29.9	33.6	2005/2004
2005/2006	30.2	38.2	31.1	33.2	2006/2005
2006/2007	31.0	39.6	30.9	33.6	2007/2006
2007/2008	31.2	36.6	30.5	32.6	2008/2007
2008/2009	29.6	35.9	29.0	31.6	2009/2008
2009/2010	28.6	35.7	28.0	30.8	2010/2009
2010/2011	29.4	34.6	25.7	29.3	2011/2010
Secondary					
2004/2005	-	-	22.5	22.5	2005/2004
2005/2006	-	-	20.6	20.6	2006/2005
2006/2007	-	-	22.3	22.3	2007/2006
2007/2008	-	-	22.2	22.2	2008/2007
2008/2009	-	-	21.9	21.9	2009/2008
2009/2010	-	-	23.0	23.0	2010/2009
2010/2011	-	-	21.9	21.9	2011/2010

2011/2010-2005/2004
Table 22: Average Number of Students Per Teacher in Jericho & AL Aghwar Governorate by Supervising Authority, 2004/2005- 2010/2011

Scholastic Year	Supervising Authority				
	Kindergartens	Private/Schools	UNRWA	Government	
2004/2005	24.5	23.5	34.6	20.8	2005/2004
2005/2006	24.8	23.3	31.0	21.3	2006/2005
2006/2007	22.2	23.3	31.0	21.1	2007/2006
2007/2008	25.9	22.8	31.0	20.5	2008/2007
2008/2009	25.3	22.7	29.2	20.3	2009/2008
2009/2010	..	21.9	29.7	19.8	2010/2009
2010/2011	22.5	22.8	28.7	17.4	2011/2010

(15)

:23

2010

Table 23: Percentage Distribution of Palestinian Population (15 Years and Above) in Jericho & AL Aghwar Governorate and the West Bank by Educational Attainment, Sex, 2010

Educational Attainment	Jericho & AL Aghwar Governorate			West Bank		
	Both Sexes	Females	Males	Both Sexes	Females	Males
Illiterate	7.0	10.9	3.3	5.2	8.3	2.2
Can Read and Write	7.8	8.2	7.4	6.8	7.6	6.1
Elementary	20.7	18.8	22.4	16.8	15.5	18.2
Preparatory	41.2	38.3	43.9	37.4	35.1	39.6
Secondary	14.1	15.2	13.0	19.3	19.5	19.0
Associate Diploma	2.7	2.5	2.9	4.5	4.6	4.3
Bachelor and Above	6.7	6.2	7.1	10.0	9.4	10.6
Total	100	100	100	100	100	100

2010-2007

Table 24: Literacy Rates of Palestinian Population (15 Years and Above) in Jericho & AL Aghwar Governorate and the West Bank by Age Groups, Sex, 2007-2010

Age Groups and Sex	Jericho & AL Aghwar Governorate				West Bank				
	2010	2009	2008	2007	2010	2009	2008	2007	
Both Sexes									
15-19	98.1	97.8	98.7	99.4	99.5	99.4	99.4	99.2	19-15
20-24	99.1	98.7	98.7	99.4	99.3	99.2	98.9	99.0	24-20
25-34	99.6	97.5	96.8	97.4	99.3	99.2	99.0	98.9	34-25
35-44	94.2	93.6	95.8	96.0	98.1	98.0	97.7	97.7	44-35
45+	75.8	75.2	71.7	72.9	80.3	79.0	76.9	76.4	+45
Total	93.0	92.4	91.7	92.5	94.8	94.4	93.9	93.7	
Males									
15-19	98.9	99.7	99.3	99.1	99.4	99.3	99.3	99.2	19-15
20-24	99.8	98.7	98.9	100.0	99.2	99.1	99.2	99.1	24-20
25-34	100.0	98.0	96.9	98.5	99.3	99.2	99.2	99.0	34-25
35-44	98.3	97.6	99.0	100.0	99.1	99.2	99.2	99.1	44-35
45+	87.2	87.8	85.6	89.7	92.4	91.2	89.3	90.3	+45
Total	96.7	96.2	95.5	97.1	97.8	97.4	97.1	97.2	
Females									
15-19	97.1	96.1	98.2	99.7	99.6	99.5	99.5	99.2	19-15
20-24	98.2	98.6	98.4	98.9	99.4	99.4	98.7	98.9	24-20
25-34	99.3	97.1	96.8	96.3	99.4	99.1	98.9	98.7	34-25
35-44	90.1	89.6	92.4	92.3	97.1	96.8	96.1	96.2	44-35
45+	64.2	62.7	58.7	56.5	68.6	67.3	65.3	63.4	+45
Total	89.1	88.7	88.0	88.1	91.7	91.3	90.6	90.1	

2010

:25

Table 25: Number of Mosques in Jericho & AL Aghwar Governorate and the West Bank, 2010

Region\Governorate	Number	/
Jericho & AL Aghwar	42	
West Bank	1,760	

2010

:26

Table 26: Number of Cultural Institutions In Operation in Jericho & AL Aghwar Governorate and the West Bank, 2010

Cultural Institutions In Operation	Jericho & AL Aghwar Governorate	West Bank	
Cultural Centers	1	350	
Theaters	-	14	
Museums	2	6	
Public Libraries	1	52	
Publishing and Distribution Institutions	-	8	
Radio and Television Stations	3	45	
Total	7	475	

2010

:27

Table 27: Number of Agricultural Holdings in Jericho & AL Aghwar Governorate and the West Bank by Type of Holding, 2010

Region\Governorate	Total	Type of Holding			/
		Mixed	Animal	Plant	
Jericho & AL Aghwar	1,541	190	808	543	
West Bank	91,028	14,494	10,964	65,570	

:28

2010/2009

Table 28: Total Area, Cultivated Land Area and Percentage of Cultivated Land Area in Jericho & AL Aghwar Governorate and the West Bank, 2009/2010

Area: km²المساحة: كم²

Region\Governorate	Percent of Cultivated Land Area from Total Area	Cultivated Land Area	Total Area	/
Jericho & AL Aghwar	4.9	29	593	
West Bank	15.7	885	5,655	

2010

:29

Table 29: Number of Livestock in Jericho & AL Aghwar Governorate and the West Bank by Type, 2010

Region\Governorate	Goats	Sheep	Cows	/
Jericho & AL Aghwar	25,791	33,032	865	
West Bank	215,774	503,431	28,666	

2010

:30

Table 30: Percentage Distribution of Households in Jericho & AL Aghwar Governorate and the West Bank by Type of Housing Unit, 2010

Type of Housing Units and Region	Percentage	
West Bank		
Villa/House	57.0	/
Apartment	41.9	
Other*	1.1	*
Total	100	
Jericho & AL Aghwar		
Villa/House	47.7	/
Apartment	45.3	
Other*	7.0	*
Total	100	

*Other: Includes Independent Room, or Tent, or Marginal.

:

*

2010

:31

Table 31: Percentage Distribution of Households in Jericho & AL Aghwar Governorate and the West Bank by Tenure of Housing Unit, 2010

Tenure of Housing Unit	Jericho & AL Aghwar Governorate	West Bank	
Owned	84.4	81.8	
Rented	9.5	10.3	
Other*	6.1	7.9	*
Total	100	100	

* Other includes From Work and Without Payment and Other

*

2010

:32

Table 32: Percentage Distribution of Households in Jericho & AL Aghwar Governorate by Number of Rooms in the Housing Unit, 2010

Number of Rooms in the Housing Unit	Percentage	
1	6.0	1
2	16.9	2
3	39.7	3
4	26.4	4
5+	11.0	+5
Total	100	
Average Number of Rooms	3.2	

2010

:33

Table 33: Percentage Distribution of Households in Jericho & AL Aghwar Governorate by Housing Density, 2010

Housing Density	Percentage	
Less Than 1	7.9	1
1.00-1.99	43.8	1.99-1.00
2.00-2.99	29.5	2.99-2.00
3.00+	18.8	+3.00
Total	100	
Average Housing Density	1.9	

2010 ·2009

*

:34

Table 34: Building Licenses Issued* in Jericho & AL Aghwar Governorate, 2009, 2010

Period	(²) Licensed Area (1000 m²)			Number of Issued Licenses						
	Total	Existing Areas	New Areas	Total	Existing additions	Existing Buildings	+ Additions + Existing Parts	Additions to Licensed Buildings	New Buildings	
2009										2009
Quarter I	1.2	0.0	1.2	8	0	0	0	2	6	
Quarter II	10.1	0.0	10.1	27	0	0	0	7	20	
Quarter III	7.0	0.0	7.0	33	0	0	0	11	22	
Quarter IV	6.3	0.0	6.3	22	0	0	0	4	18	
Total	24.6	0.0	24.6	90	0	0	0	24	66	
2010										2010
Quarter I	6.3	6.0	0.3	29	1	0	0	7	21	
Quarter II	14.7	14.7	0.0	73	0	0	0	5	68	
Quarter III	13.6	13.6	0.0	62	0	0	0	3	59	
Quarter IV	7.5	7.5	0.0	38	0	0	0	3	35	
Total	42.1	41.8	0.3	202	1	0	0	18	183	

*Does not include boundary walls licenses

*

2010

:35

Table 35: Number of Localities in Jericho & AL Aghwar Governorate by Doer, Periodicity and Mean of Solid Waste Collection, 2010

Item	Number of Localities	
Doer of Solid Waste Collection		
Local Authority	7	
Special Private Contractor	0	
Other	2	
UNRWA	2	
No Solid Waste Collection Service	3	
Total	14	
Periodicity of Solid Waste Collection		
Daily	3	
Once a Week	1	
More Than Once a Week	7	
Once Every Two Weeks or More	0	
Total	11	
Mean of Solid Waste Collection		
Special Waste Vehicle	9	
Tractor	1	
Other	1	
Total	11	

2010

:36

Table 36: Number of Localities in Jericho & AL Aghwar Governorate by Wastewater Disposal Method, 2010

Disposal Method	Number of Localities	
Cesspit	10	
Other	1	
Not Stated	3	

:37

2010

Table 37: Distribution of Localities in Jericho & AL Aghwar Governorate by the Main Water Source of the Network and the Main Source of Electricity, 2010

The Source	Number of Localities	
Main Water Source of the Network		
Israeli Source (Mekorot) or Local Authority	11	()
Another Local Authority	1	
No Water Network	2	
Total	14	
Main Electricity Source		
Israeli Electricity Company or Local Authority	13	
No Electricity Network	1	
Total	14	

2010

Table 38: Number of Licensed Road Vehicles in Jericho & AL Aghwar Governorate and The West Bank by Type of Vehicle and Newly Registered Vehicles, 2010

Type of Vehicle	New Registered		Licensed		
	Jericho & AL Aghwar Governorate	* West Bank*	Jericho & AL Aghwar Governorate	* West Bank*	
Private Cars	202	14,954	1,738	85,874	
Taxis	35	2,131	117	8,616	()
Motorcycles and Moped	2	42	55	303	
Buses (Public/ Private)	13	204	55	1,350	(/)
Trailers and Semi-Trailers	2	190	1	693	
Agricultural Tractors	4	47	10	830	
Road Tractors	0	40	5	315	
Trucks and Commercial Cars	24	2,392	348	23,114	
Other Vehicles	0	48	2	470	
Total	282	20,048	2,331	121,565	

- The number of vehicles licensed by the Directorate in the Governorate and did not reflect the actual number of vehicles.

* Data does not include those parts of Jerusalem Governorate, which were annexed by Israel in 1967

1967

2010

:39

Table 39: Main Indicators for Hotels Activity in Jericho & AL Aghwar Governorate and the West Bank, 2010

Region\Governorate	No. of Nights	No. of Guests	Average No. of Beds	Average No. of Rooms	No. of Hotels	/
Jericho & AL Aghwar	99,127	63,166	721	329	3	
West Bank	1,283,178	576,159	9,968	4,589	87	

2009

Table 40: Number of Establishments in Operation and Employed Person in the Private Sector, Non Governmental Organization Sector and Government Companies in Jericho & AL Aghwar Governorate by Locality and Number of Employed Persons, 2009

Locality	No. of Employed Persons			No. of Establishments
	Total	Females	Males	
Marj Na'ja	12	3	9	10
Az Zubeidat	16	0	16	13
Marj al Ghazal	7	0	7	5
Al Jiftiik	410	175	235	127
Fasayil	10	0	10	8
Al 'Auja	309	112	197	112
An Nuwei'ma	50	14	36	20
'Ein ad Duyuk al Fauqa	47	7	40	21
'Ein as Sultan Camp	130	25	105	66
Jericho (Ariha)	2,100	430	1,670	657
Aqbat Jaber Camp	434	103	331	148
An Nabi Musa	60	14	46	22
Total	3,585	883	2,702	1,209

2009

:41

Table 41: Number of Establishments in Operation in the Private Sector, Non Governmental Organization Sector and Government Companies in Jericho & AL Aghwar Governorate by Main Economic Activity and Number of Employed Persons, 2009

ISIC	Economic Activity	No. of Employed Persons			No. of Establishments		
		Total	Females	Males			
A	Agriculture (raising of cattle & other animals)	742	285	457	251	()
C	Mining & quarrying	0	0	0	0		
D	Manufacturing	495	119	376	99		
E	Electricity and water supply	31	1	30	4		
F	Construction	23	1	22	5		
G	Wholesale, retail trade & repairs	1,023	133	890	541		
H	Hotels & restaurants	396	34	362	71		
I	Transport, storage & communications	114	12	102	11		
J	Financial intermediation	74	17	57	15		
K	Real estate, renting & business activities	55	12	43	36		
M	Education	179	128	51	28		
N	Health & social work	177	70	107	43		
O	Other community, social & personal services	276	71	205	105		
Total		3,585	883	2,702	1,209		

2009-2005

-

:42

Table 42: Value of Registered Imports and Exports by SITC-3 Categories in Jericho & AL Aghwar Governorate, 2005-2009

Value in 1000 US\$

SITC Code	Section	The Value						
		2009	2008	**2007	2006	2005		
	Imports							
	Total Imports	51,717.2	36,736.7	55,119.0	36,262.7	28,904.9		
0	Food And Live Animals	10,827.0	4,405.5	8,089.8	6,628.8	9,201.4		0
1	Beverages And Tobacco	3,045.0	2,040.5	1,230.1	1,071.0	798.5		1
2	Raw Materials, Inedible Except Fuels	1,622.3	101.9	58.7	447.6	306.5		2
3	Mineral Fuels, Lubricants And related Materials	24,425.9	25,264.7	37,871.6	24,391.9	11,974.8		3
4	Animal And Vegetable Oils, Fats And Waxes	19.8	7.0	4.3	1.4	8.2		4
5	Chemical And Related Products, n.e.s.*	2,207.8	978.6	1,698.2	718.3	1,028.0	* . . .	5
6	Manufactured Goods Classified mainly By Material	4,148.1	2,687.3	3,581.3	1,685.5	1,791.5		6
7	Machinery And Transport Equipment's	4,761.8	972.3	2,433.0	604.7	2,580.8		7
8	Miscellaneous Manufactured Articles	659.4	278.9	152.0	307.4	1,211.5		8
9	Commodities And Transactions n.e.s. * In The SITC-Rev.3	-	-	-	406.1	3.7	* -	9

* n.e.s: not elsewhere specified

. . . *

**Revised data

**

2009-2005

-

:() 42

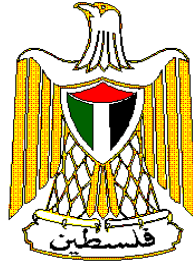
Table 42 (Cont.): Value of Registered Imports and Exports by SITC-3 Categories in Jericho & AL Aghwar Governorate, 2005-2009

Value in 1000 US\$

SITC Code	Section	The Value						
		2009	2008	2007	2006	2005		
	Exports							
	Total Exports	3,012.4	3,175.4	2,452.1	2,857.5	1,369.9		
0	Food And Live Animals	1,070.4	472.4	555.3	571.0	81.5		0
1	Beverages And Tobacco	-	-	-	7.2	131.0		1
2	Raw Materials, Inedible Except Fuels	1,304.4	609.4	396.7	8.0	434.9		2
3	Mineral Fuels, Lubricants And related Materials	6.8	-	-	-	-		3
4	Animal And Vegetable Oils, Fats And Waxes	285.2	75.6	78.5	418.0	-		4
5	Chemical And Related Products, n.e.s.*	-	56.8	17.2	6.6	-	*...	5
6	Manufactured Goods Classified mainly By Material	305.5	1,409.9	1,294.3	690.7	546.1		6
7	Machinery And Transport Equipment's	40.0	98.9	70.7	249.0	126.5		7
8	Miscellaneous Manufactured Articles	-	452.4	39.6	907.0	49.9		8
9	Commodities And Transactions n.e.s.* In The SITC-Rev.3	-	-	-	-	-	-	9

* n.e.s: not elsewhere specified

... *



**Palestinian National Authority
Palestinian Central Bureau of Statistics**

**Jericho & AL Aghwar Governorate Statistical
Yearbook (3)**

October, 2011

**This document is prepared in accordance with the standard
procedures stated in the Code of Practice for Palestine Official
Statistics 2006**

© October, 2011.

All Rights Reserved

Suggested Citation:

Palestinian Central Bureau of Statistics, 2011. *Jericho & AL Aghwar Governorate
Statistical Yearbook, No (3)* Ramallah – Palestine.

All correspondence should be directed to:
**Palestinian Central Bureau of Statistics
P.O.Box 1647, Ramallah, Palestine.**

Tel: (970/972) 2 298 2700

Fax: (970/972) 2 298 2710

Toll Free: 1800300300

E-Mail : diwan@pcbs.gov.ps

Website: <http://www.pcbs.gov.ps>

Acknowledgment

The Palestinian Central Bureau of Statistics (PCBS) extends its deep appreciations to all those who contributed to bring this book out into the light.

Jericho & AL Aghwar Governorate Statistical Yearbook No. (3) has been prepared by a technical team from (PCBS) and with a joint financial support of the Palestinian National Authority (PNA) and the core Funding Group (CFG) for the year 2011 represented by the Representative Office of Norway to PNA and the Swiss Development and Cooperation Agency (SDC).

Moreover, PCBS very much appreciates the distinctive efforts of the Core Funding Group (CFG) for their valuable contribution for funding the preparation of this book.

Work Team

- **Book Preparation**

Ayat Maharmeh
Rami Sarawan

- **Material Preparation:**

Hana Bukhari	Rami Al-Dibs	Husam Khleifeh
Hatem Qararyeh	Zahran Khleif	Maher Shami
Saadi Al-Masri	Borhan Isaa	Jamil Rimawi
Maher Sbeih	Abdullah Azzam	Adel Kararey
Muna Al-Qayya	Inas Al Rifai	Nehaya Odeh
Ruba Qubbaj	Abedmin'em Jalboush	Isra' Sammodi

- **Maps Design**

Reham Dar Ali
Akram khader

- **Dissemination Standards**

Hanan Janajreh

- **Preliminary Review**

Maen Salhab Bader Ihsoun Nazmi Harb Mahmoud Al-Qayya

- **Final Review**

Mahmoud Jaradat

- **Overall Supervision**

Ola Awad President of PCBS

Preface

PCBS has sought, since it was established, to build a system of national official statistics based on the needs of the Palestinian society and in line with international recommendations as prerequisite for full membership in the international statistical community. PCBS has adopted the principle of progression within the Palestinian priorities of the current phase as basis for advancing towards completing the statistical system. PCBS has accomplished many statistical activities using primary sources including censuses, field surveys, as well as compiling statistics from secondary sources such as the administrative records, through cooperation with institutions in the public and private sectors.

We are pleased to present Jericho & AL Aghwar Governorate Statistical Yearbook (3) to provide continuous time series that allow reviewing the general directions in the different areas through a comprehensive statistical reference that covers most population, social, economic, and geographic areas.

This book is one of the most important and comprehensive official statistical references about Jericho & AL Aghwar governorate. It provides official statistics about the different areas of life in the governorate.

We hope that this publication would contribute in bridging the information gap to serve the development process, planning and decision making based on professional and scientific basis at the national and governorate level.

October, 2011

**Ola Awad
President of PCBS**

Note

Please note that the statistics presented in this book are derived from various primary and secondary sources, which are not fully consistent in the reference time, concepts or methodology. Therefore, it is recommended to take this note into consideration while using these statistics.

A set of special symbols were used in the tables of this book. These symbols refer to:

- (-) Nil
- (..) Data not available

Table of Contents

Subject	Page
List of Tables	
List of Figures	
List of Maps	
Executive Summary	
Sources of Chapter Three	
Tables	59

List of Tables

Table	Page
Table 1: Estimated Population in the Palestinian Territory at Mid-Year by Region and Governorate, 1997, 2007-2011	61
Table 2: Estimated Population in Jericho & AL Aghwar Governorate and the West Bank at Mid-Year by Sex, 2007-2011	62
Table 3: Palestinian Population in Jericho & AL Aghwar Governorate and the West Bank at End Year by Refugee Status, 2007	62
Table 4: Population in Jericho & AL Aghwar Governorate at Mid-Year by Locality, 2011	63
Table 5: Number of Occupied Housing Units in Jericho & AL Aghwar Governorate by Locality, 2007	63
Table 6: Number of Registered Marriages in Shariah and Church Courts in Jericho & AL Aghwar Governorate, 1999-2010	64
Table 7: Median Age at First Marriage in Jericho & AL Aghwar Governorate and the West Bank by Sex, 2010	64
Table 8: Number of Registered Marriages in Shariah and Church Courts in Jericho & AL Aghwar Governorate by Previous Marital Status of Groom, Bride, 2010	64
Table 9: Number of Registered Marriages in Shariah and Church Courts in Jericho & AL Aghwar Governorate by Age of Groom and Bride, 2010	65
Table 10: Number of Registered Divorces in Shariah Courts in Jericho & AL Aghwar Governorate, 1999-2010	65
Table 11: Number of Registered Divorces in Shariah Courts in Jericho & AL Aghwar Governorate by Age of Divorcees, 2010	66
Table 12: Number of Registered Divorces in Shariah Courts in Jericho & AL Aghwar Governorate by Duration of Marriage, 2010	66
Table 13: Number of Registered Live Births and Registered Deaths in Jericho & AL Aghwar Governorate and the West Bank by Sex, 2010	67
Table 14: Beds Per 1000 Inhabitant, Number of Hospitals and Number of Beds in Jericho & AL Aghwar Governorate, 2005-2010	67
Table 15: Hospital Activities in Jericho & AL Aghwar Governorate by Activity, 2005-2010	67
Table 16: Number of Primary Health Care Clinics and Centers in Jericho & AL Aghwar Governorate by Supervising Authority, 2005-2010	68
Table 17: Percentage Distribution of Population (15 Years and Above) in Jericho & AL Aghwar Governorate by Sex and Labor Force Status, 2005-2010	68
Table 18: Poverty Rates According to Actual Monthly Consumption Patterns of Individuals in Jericho & AL Aghwar Governorate and the West Bank, 2009-2010	69
Table 19: Number of Schools and Kindergartens in Jericho & AL Aghwar Governorate and the West Bank by Stage and Supervising Authority, 2009/2010- 2010/2011	69

Table		Page
Table 20:	Number of Students in Schools and Kindergartens in Jericho & AL Aghwar Governorate and the West Bank by Supervising Authority, Sex and Stage, 2009/2010-2010/2011	70
Table 21:	Average Number of Students Per Class in Jericho & AL Aghwar Governorate by Stage and Supervising Authority, 2004/2005-2010/2011	71
Table 22:	Average Number of Students Per Teacher in Jericho & AL Aghwar Governorate by Supervising Authority, 2004/2005- 2010/2011	72
Table 23:	Percentage Distribution of Palestinian Population (15 Years and Above) in Jericho & AL Aghwar Governorate and the West Bank by Educational Attainment, Sex, 2010	72
Table 24:	Literacy Rates of Palestinian Population (15 Years and Above) in Jericho & AL Aghwar Governorate and the West Bank by Age Groups, Sex, 2007-2010	73
Table 25:	Number of Mosques in Jericho & AL Aghwar Governorate and the West Bank, 2010	73
Table 26:	Number of Cultural Institutions In Operation in Jericho & AL Aghwar Governorate and the West Bank, 2010	74
Table 27:	Number of Agricultural Holdings in Jericho & AL Aghwar Governorate and the West Bank by Type of Holding, 2010	74
Table 28:	Total Area, Cultivated Land Area and Percentage of Cultivated Land Area in Jericho & AL Aghwar Governorate and the West Bank, 2009/2010	74
Table 29:	Number of Livestock in Jericho & AL Aghwar Governorate and the West Bank by Type, 2010	75
Table 30:	Percentage Distribution of Households in Jericho & AL Aghwar Governorate and the West Bank by Type of Housing Unit, 2010	75
Table 31:	Percentage Distribution of Households in Jericho & AL Aghwar Governorate and the West Bank, by Tenure of Housing Unit 2010	75
Table 32:	Percentage Distribution of Households in Jericho & AL Aghwar Governorate by Number of Rooms in the Housing Unit, 2010	76
Table 33:	Percentage Distribution of Households in Jericho & AL Aghwar Governorate by Housing Density, 2010	76
Table 34:	Building Licenses Issued in Jericho & AL Aghwar Governorate, 2009, 2010	77
Table 35:	Number of Localities in Jericho & AL Aghwar Governorate by Doer, Periodicity and Mean of Solid Waste Collection, 2010	77
Table 36:	Number of Localities in Jericho & AL Aghwar Governorate by Wastewater Disposal Method, 2010	78

Table		Page
Table 37:	Distribution of Localities in Jericho & AL Aghwar Governorate by the Main Water Source of the Network and the Main Source of Electricity, 2010	78
Table 38:	Number of Licensed Road Vehicles in Jericho & AL Aghwar Governorate and the West Bank by Type of Vehicle and Newly Registered Vehicles, 2010	79
Table 39:	Main Indicators for Hotels Activity in Jericho & Al Aghwar Governorate and the West Bank, 2010	79
Table 40:	Number of Establishments in Operation and Employed Person in the Private Sector, Non Governmental Organization Sector and Government Companies in Jericho & AL Aghwar Governorate by Locality and Number of Employed Persons, 2009	80
Table 41:	Number of Establishments in Operation and Employed Person in the Private Sector, Non Governmental Organization Sector and Government Companies in Jericho & AL Aghwar Governorate by main Economic activity and Number of Employed Persons, 2009	81
Table 42:	Value of Registered Imports and Exports by SITC-3 Categories in Jericho & AL Aghwar Governorate, 2005-2009	82

List of Figures

Figure		Page
Figure 1:	Estimated Population in Jericho & AL Aghwar Governorate at Mid-Year, 1997, 2007-2011	35
Figure 2:	Number of Registered Marriages and Divorces in Shariah and Church Courts in Jericho & AL Aghwar Governorate, 1999-2010	36
Figure 3:	Number of Primary Health Care Clinics and Centers in Jericho & AL Aghwar Governorate by Supervising Authority, 2005-2010	37
Figure 4:	Percentage Distribution of Population (15 Years and Above) in Jericho & AL Aghwar Governorate by Labor Force Status, 2005-2010	41
Figure 5:	Percentage Distribution of Population (15 Years and Above) in Jericho & AL Aghwar Governorate by Labor Force Components, 2010	42
Figure 6:	Number of Schools in Jericho & AL Aghwar Governorate by Stage and Supervising Authority, 2010/2011	45
Figure 7:	Number of Students in Schools in Jericho & AL Aghwar Governorate by Stage and Supervising Authority, 2010/2011	46
Figure 8:	Number of Agricultural Holdings in Jericho & AL Aghwar Governorate by Type of Holding, 2009/2010	47
Figure 9:	Percentage Distribution of Households in Jericho & AL Aghwar Governorate by Type of Housing Unit, 2010	48
Figure 10:	Number of Issued Building Licenses in Jericho & AL Aghwar Governorate by Quarter, 2010	49
Figure 11:	Licensed Area for Building in Jericho & AL Aghwar Governorate by Area Type and Quarter, 2010	49
Figure 12:	Number of Licensed Road Vehicles in Jericho & AL Aghwar Governorate by Type of Vehicle, 2010	54

List of Maps

Map		Page
Map 1:	Population in Jericho & AL Aghwar Governorate at Mid Year by Locality, 2011	39
Map 2:	Percentage Distribution of Population (15 Years and Above) in Jericho & AL Aghwar Governorate and West Bank by Sex and Labor Force Components, 2010	43
Map 3:	Occupied Housing Units in Jericho & AL Aghwar Governorate by Locality, 2007	51

Executive Summary

PCBS presents this periodic statistical report about the reality of the Palestinian population in Jericho & AL Aghwar Governorate as part of its policy to shed light on the status of Palestinian population in the different governorates in the Palestinian Territory. These are the most prominent findings:

- Estimated population in Jericho & AL Aghwar Governorate totaled 46,718 person at mid 2011 including 23,406 males and 23,312 females.
- About 49.5% of the total population of Jericho & AL Aghwar Governorate are refugees at end year 2007.
- Number of registered marriage certificates at Shariah and church courts during 2010 in Jericho & AL Aghwar Governorate totaled 293. The number of registered divorce cases at Shariah courts totaled 91.
- Number of registered live births in 2010 in Jericho & AL Aghwar Governorate totaled 2,188 birth. Number of registered deaths in the governorate for the same year totaled 140.
- Number of hospitals in 2010 in Jericho & AL Aghwar Governorate was 1 hospital. Number of hospital beds totaled 54 with bed occupancy rate of 1.2 per 1000 people.
- The Participation Rate of labor force (Aged 15 Years and Above) in 2010 in Jericho & AL Aghwar Governorate was 48.6% from the total manpower in Jericho & AL Aghwar Governorate, in 2010, Unemployed persons constitute about 12.7% of those participating in labor force.
- 26.4% of the individuals are poor in Jericho & AL Aghwar Governorate in 2010.
- There were 30 schools and 17 kindergartens in Jericho & AL Aghwar Governorate in 2010/2011 .
- The area of lands in Jericho & AL Aghwar Governorate in 2010 was 593 square kilometers.
- Number of Agricultural Holdings in Jericho & AL Aghwar Governorate reached 1,541 during the agricultural year 2009/2010.
- Number of building licenses in Jericho & AL Aghwar Governorate in 2010 totaled 202 license for an area of 42.1 thousand square meters.
- Water network are main source of water for 11 localities in Jericho & AL Aghwar Governorate, 1 locality from Another Local Authority and 2 localities without water network. Electricity network are main source of electricity for 13 localities.
- Number of licensed vehicles in 2010 in Jericho & AL Aghwar Governorate was 2,331 vehicle.
- The value of imports increased in Jericho & AL Aghwar Governorate in 2009 compared to 2008, reaching about 51.7 million US\$.
- Exports in Jericho & AL Aghwar Governorate in 2009 decreased, in comparison with year 2008, reaching 3.0 million US\$.
- There was deficit in the trade balance of Jericho & AL Aghwar Governorate in 2009 totaling 48.7 million US\$.

Sources of Chapter Three

1. **Palestinian Central Bureau of Statistics, 2011.** *Revised estimate based on the final results of Population, Housing and Establishment Census 2007. Ramallah-Palestine.*
2. **Palestinian Central Bureau of Statistics, 2009.** *Population, Housing and Establishment Census 2007 Main Indicators by Locality Type. Ramallah-Palestine.*
3. **Palestinian Central Bureau of Statistics, 2008.** *Population, Housing and Establishment Census 2007. Census Final Results in the West Bank- Summary (Population and Housing). Ramallah-Palestine.*
4. **Palestinian Central Bureau of Statistics, 2010.** *Population, Housing and Establishment Census 2007, and its update until 31/12/2009. Ramallah – Palestine.*
5. **Palestinian Central Bureau of Statistics, 2011.** *Local Community Survey 2010: Main Findings. Ramallah – Palestine.*
6. **Palestinian Central Bureau of Statistics, 2011.** *Marriage and Divorce in the Palestinian Territory, 2010 (Data base). Ramallah - Palestine.*
7. **Palestinian Central Bureau Of Statistics, 2011.** *Population Register, Ministry of Interior, Updated Version Until 10/2/2011. Not published data*
8. **Palestinian Central Bureau of Statistics, 2011.** *Health Statistics database, (2005-2010). Ramallah-Palestine.*
9. **Ministry of Health– Annual Report, 2005-2010.** *Nablus-Palestine.*
10. **Palestinian Central Bureau of Statistics, 2011.** *Database of Labor Force Survey, 2005–2010. Ramallah–Palestine.*
11. **Palestinian Central Bureau of Statistics, 2011.** *Database of Expenditure and Consumption survey,(2009–2010). Ramallah–Palestine.*
12. **Palestinian Central Bureau of Statistics, 2011.** *Education Census Database in the Scholastic Year 2004/2005-2009/2010. Ministry of Education and Higher Education. Ramallah–Palestine.*
13. **Palestinian Central Bureau of Statistics and Ministry of Culture, 2010.** *The Status of Cultural Institutions Survey, 2010 Main Findings. Ramallah - Palestine.*
14. **Palestinian Central Bureau of Statistics, 2011.** *Agriculture Census 2010, Press Conference on the Preliminary findings of the Agriculture Census-2010, Ramallah, Palestine.*
15. **Palestinian Central Bureau of Statistics, 2011.** *Housing Annual Report, 2010. Ramallah - Palestine.*
16. **Palestinian Central Bureau of Statistics, 2010.** *Building licenses statistics: First Quarter – Fourth Quarter 2009. Ramallah–Palestine.*
17. **Palestinian Central Bureau of Statistics, 2011.** *Building licenses statistics: First Quarter –Fourth Quarter 2010. Ramallah–Palestine.*
18. **Palestinian Central Bureau of Statistics, 2011.** *Transportation and Communication Statistics in the Palestinian Territory: Annual Report 2010.*
19. **Palestinian Central Bureau of Statistics, 2010.** *Hotel Survey in the Palestinian Territory, 2009. Ramallah-Palestine.*
20. **Palestinian Central Bureau of Statistics, 2011.** *Foreign Trade Statistics–goods and services. Ramallah–Palestine.*